

# EVI

MY WAY MY STYLE



Floring

# THE JOURNEY

HAS JUST BEGUN.....



**GEOMETRIC PATTERNS IN PERFECT STYLISH DESIGN  
FOR THOSE THAT ARE VERY DESIGN-CONSCIOUS TO  
MINIMALIST INTERIORS DESIGN.**

**EVI**

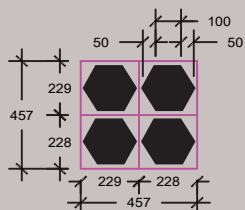
*Geometric Design By evi*

# GEOMETRIC DESIGN

*in*

*perfect stylish design for those that are very design - conscious to minimalist interiors design.*

**0.278sqft x 52 pcs  
14.45 sqft/box**



EVI 101

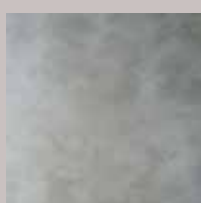


EVI 102

**SQUARE TILE CUT TO HEXAGON SHAPE**  
Original Size : 457.2mm x 457.2mm



EVI 101

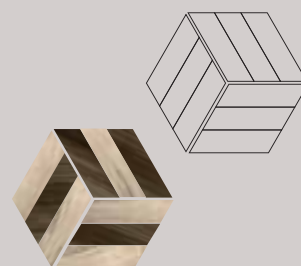


EVI 102

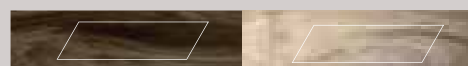


STONE SURFACE

▼ 2 Colors LVT plank combination with die cutting and organised into hexagon shape



Original size : 915mm x 183mm



EVI 105



EVI 103



**0.74 sqft x 20 pcs  
14.8 sqft / 1.37 sqm / box**

# SPC

## CLICK FLOORING

---

### AVAILABLE COLOURS:

EVI 005

EVI 021

EVI 022

EVI 026

EVI 075

EVI 1701

EVI 1705

EVI 1716

EVI 1972

EVI 1192

### AVAILABLE SIZE :

184MM X 1220MM X 4MM / 5MM

EVI 1976

EVI 1977

EVI 1989

EVI 2901C

EVI 2902C

EVI 2904C

EVI 2905C

EVI 2906

EVI 2907C

EVI 9905

# HERRINGBONE SERIES

SMOOTH

## DIMENSION

4.1MM X 127MM X 635MM

## PACKAGING

A+B

21 SQFT + 21 SQFT

24 PCS + 24 PCS

70 CTN / PALLET

1 CTN / 18KG



## AVAILABLE COLOURS:

RB701  
CREME OAK

RB702  
IXORA OAK

RB703  
HAMPTON OAK

RB704  
FROST OAK

RB705  
INARI OAK

RB706  
LAVA OAK

RB707  
OPERA OAK

RB708  
CHARCOAL OAK



EVI 3302

# SPC CHARACTERISTICS



## 100% VIRGIN MATERIAL

SPC floor's main raw material is high quality PVC resin, it is environment-friendly and renewable resources; does not contain harmful material. No soluble volatile matter, no radiation.

## ANTI-SKID

SPC floor have a speial wear-resising layer of the floor and compared with common floor material, our SPC floor has higher friction when it is wet in which it meets the safety requirements and so on.



## WATER RESISTANT

The main component of SPC flooring is Vinyl Resin, which has no compulsion with water. And mildew will not occur because of high humidity.



## NOISE REDUCTION

SPC floor has a very high sound-absorbing capacity. There is no comparison, so in need of quiet environment such as hospital wards, libraries, etc. Royal Floor SPC floor being your first choice

## BEAUTIFUL & EASY TO INSTALL

SPC flooring uses an advanced technology; click lock technology which has a clean finish when the installation is done.



## FIRE RETARDANT

SPC floor fire rating is grade Bf1. Flameretardant, not spontaneous combustion. And this type of flooring does not produce any toxic or harmful gases.

**NEW LIFE,**



# NEW BEGINNINGS

Vinyl comes in a large variety of styles, colors, and designs. While a popular choice is the wood and plank designs, you can find vinyl to suit almost any room or decor.

Our own plank styles come in many different shades and types, allowing you to choose the wood flooring that best fits your home.

## AVAILABLE SIZE :

**915MM X 183MM X 3MM**

## AVAILABLE COLOURS:

EVI 101

EVI 102

EVI 103

EVI 104

EVI 105

EVI 106

EVI 107

EVI 108

# VINYL TILES



**AVAILABLE SIZE :**

**152MM X 914.4MM X 2.5MM**

**AVAILABLE COLOURS:**

**EVI075**

**EVI 079**

**EVI 187**

**EVI 432**

**EVI 561**

**EVI 893**

**EVI 905**

Vinyl comes in a large variety of styles, colors, and designs. While a popular choice is the wood and plank designs, you can find vinyl to suit almost any room or decor.

Our own plank styles come in many different shades and types, allowing you to choose the wood flooring that best fits your home

# SPC CLICK FLOORING DETAILS

Products Name :	SPC Click flooring
Thickness	4mm
Wear Layer	0.3mm
Specification	184mmx1220mm
Surface Texture:	Embossed
Click System:	Uniclic 2G
Raw Material Composition	1.Poly vinyl Chloride    2.Calcium Powder 2.3.Calcium-Zinc Stabilizer    4.PE Wax    5.Lubricant
Finish :	UV Coating
Color	Wood-Grain
Flammability:	Class Bf1-s1
Slip Resistance:	Class DS
Sound Insulation	5dB
Dimensional Stability to Heat	≤0.12%(80%, 6Hrs)
Curling after Exposure to Heat	≤1.2mm(80, 6Hrs)
Wear Resistance	≤0.015g
Peel Resistance	≥2.8Kgf/2cm
Certificate:	Floor Score
OEM:	Offered

# PVC TILE FLOORING DETAILS

## PVC TILE SPECIFICATION

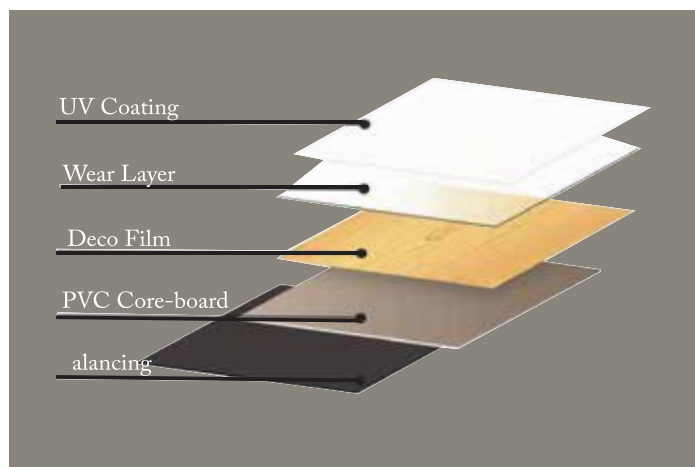
Specification		Wood Tile		SquareTile	
Size		183 mm * 915 mm		457.2 mm * 457.2 mm	
Thickness	(±0.1)	3 mm	2.2 mm	3 mm	2.2 mm
Packing	Box	20 pcs	26 pcs	16 pcs	21 pcs
	m2	3.3489	4.3535	3.3445	4.3896
Weight		17.6 kgs		18 kgs	

## PVC TILE STRUCTURE



# VINYL EURO - S

4 M M



<b>Dimension</b>	<b>1220mm x 180mm (48" x 7")</b>
<b>Wearlayer</b>	<b>0.4mm</b>
<b>Surface</b>	<b>Embossed</b>
<b>Features</b>	<b>Vinyl Flooring</b>
<b>System</b>	<b>Click</b>
<b>Quantity</b>	<b>10 pcs (23.64sqft)</b>

# EUCALYPTUS CLASSIC



**Series** | **Dimension**  
Laminate **ELE 8mm (1205 x 192 x 8mm)**  
**Benefit** | Highly wear and scratch resistance **AC 3**

**ELE 063** Silver Leone Oak

**ELE 659** South Oak 2 - Board

**ELE 062** Oak

**ELE 031** Mountain Butternut

**ELE 011** Alder Country

**ELE 629** Canyon Nostalgia Oak

**ELE 067** Canyon Barnwood Oak

**ELE 073** Teak

**ELE 072** Teak Naturdiele

**ELE 079** Light Burma Teak

**ELE 733** Surabaya Teak

**ELE 071** Java Teak

**ELE 069** Monument Oak

**ELE 611** Vario Oak

Lasting design with a timeless quality embossed surface and an affordable alternative to traditional hardwood because of its resemblance to woodgrain design.

# EUCALYPTUS EXCLUSIVE



**Series** | **Dimension**  
Laminate **ELI 8mm (1202 x 192 x 8mm)**  
**Benefit** | Highly wear and scratch resistance **AC 3**

**ELI 001** Silver Savannah

**ELI 507** Mystique Oak

**ELI 008** Winewood Oak

**ELI 018** Serene Sepia

**ELI 073** Teak

**ELI 011** Himalayan Merbau

**ELI 024** Sherwood Dozuki

Featuring the latest technology product with resistant to daily wear and tear, it enhances the ambience of the house with the feel of homeliness and comfort. **EVI** furnishes you with a complete decorative solution with its variety of patterns that eases the choice of your desired design. It is also scientifically proven without formaldehyde spreading and anti-bacteria allowing you peace of mind.

# EUCALYPTUS TIMBER



Series	Dimension
Laminate	<b>ELTI 12mm (1202 x 192 x 12mm)</b>
Benefit	Highly wear and scratch resistance <b>AC 4</b>

**ELTI 659** South Oak 2 - Board

**ELTI 009** Country Oak

**ELTI 005** Kalahari Oak

**ELTI 017** Tropical Walnut

**ELTI 506** Sepia Teak

**ELTI 514** Citrus Cedar

Inspired by the contemporary and modern design ideas, EVI FLOOR is composed of a MR HDF core which is moisture resistant, high-density fibre board that is highly durable. It is indeed a floor of choice with the benefits of colour, design and style. The advantages are limitless as they are environmentally friendly, cost effective, hassle-free maintenance, long lasting and non allergenic.

# EUCALYPTUS COLLECTION



Series	Dimension
Laminate	<b>ELC 8mm (1215 x 196 x 8mm)</b>
Benefit	Highly wear and scratch resistance <b>AC 3</b>

**ELC 026** Teak Allover

**ELC 001** Relief Oak Allover

**ELC 013** Heirloom Maple

EVI Premium is the ideal laminate flooring for today's busy life. This EVI FLOOR laminate flooring is lovely to look at, easy to care for and provides the perfect foundation for a thrilling juxtaposition of tradition and modernity. What's more, EVI Premium is simplicity itself to install and offers a perfect result.

## EVI Floor

## Accessories Products



Aluminum are available in 3 colours: ☐ Silver ☐ Black ☐ Bronze



MDF / PVC Nose Skirting



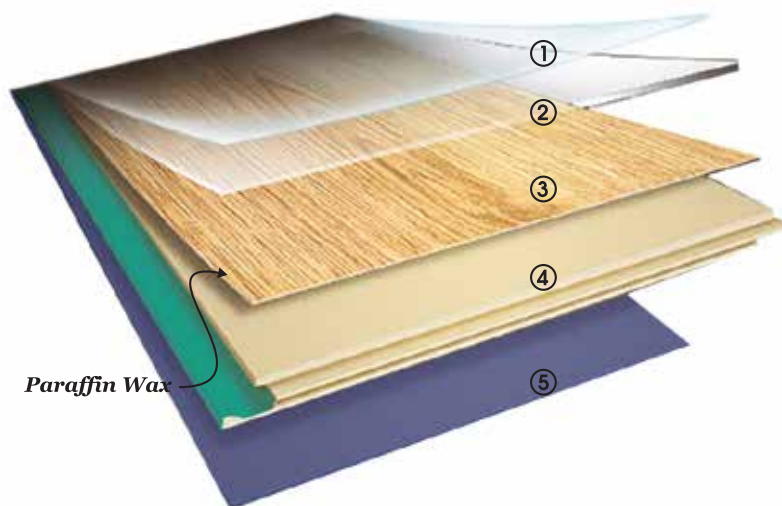
Aluminium Stair Nose (F)



Overlay Underlay EVA/EPE

# EVI

Floor Series panel consists of 5 layers of different materials which are heat-pressed on top of each other. Each layer has its own specific function.



- 1 Overlay (Aluminium Oxide)**  
Highly wear and scratch resistant
- 2 Melamine Resin**  
Impregnated with decorative layer to protect the plank from scratches, stains and moisture penetration
- 3 Decorative Layer**  
Light fastness and UV resistant
- 4 HDF (Eucalyptus wood) + (Paraffin Wax)**  
High density fibre board that is highly durable equipped with moisture and impact resistant features
- 5 Balancing Layer**  
Ensures dimensional stability and prevents moisture penetration

## EVI PRODUCT ADVANTAGES



**EVI FLOOR Series has been subjected to vigorous tests carried out according to exacting EN and DIN standards.**

Characteristics	Standard	Test Result
Class of use	EN 13329	Class 23/31, Class 23/32
Abrasion Resistance	EN 13329	AC 3, AC 4+
Impact Resistance	EN 13329	IC 1, IC 2
Fire Resistance	BS 476 Part 7	Class 2
Surface Stain Resistance	EN 438-2, 15	Group 1, 2 & 3 : 5 (No visible change)
Resistance to Cigarette Burns	EN 438-2, 18	4
Light Fastness	EN 20105 - B02	Better than 6 (Blue wool scale)
Effect of a Furniture Leg	EN 424	No damage shall be visible, when tested with foot type 0
Effect of a castor chair	EN 425	No change in appearance or damage
Static indentation	EN 433	No visible change, i.e. $\leq 0.01$ mm indentation using a straight steel cylinder $\varnothing = 11.30$ mm
Squareness	EN 13329	$\leq 0.20$ mm
Straightness	EN 13329	$\leq 0.30$ mm/m
Openings between elements	EN 13329	Average : $\leq 0.15$ mm, max : $\leq 0.20$ mm
Height difference between	EN 13329	Average : $\leq 0.10$ mm, max : $\leq 0.15$ mm
Surface Soundness	EN 13329	$\geq 1.0$ N.mm <sup>2</sup>
Density	EN 323/IS 2380	12 % 850 - 900kg/m <sup>3</sup>





# COLLECTION DESIGN

Transform the ambience of your room with our laminated floorings. We carry many designs to suit your preferences. Impact resistant and sound absorbing, our laminated floorings are engineered in Germany. Backed by our warranty, you can rest assured on our quality as well as workmanship. Please read on to find out what makes us different.

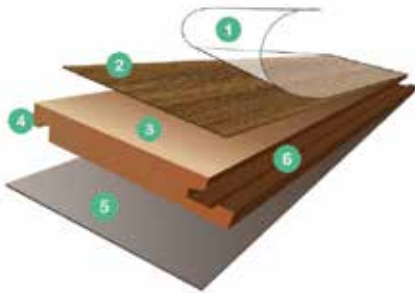
“ MY WAY  
MY STYLE ”

# LAMINATED FLOORING

## AVAILABLE SIZE:

191 X 1205 X 8mm(2.48 sqf/pc)

### UNIQUE FEATURES



#### 1 OVERLAY - 100% Europe Origin

- Protect daily wear and tear
- Superior moisture resistance
- Highest clarity

#### 2 DECORATIVE PAPER - 100% Europe Origin

- High precision printing
- Wide range of authentic wood effect designs

#### 3 TROPICAL HARDWOOD HDF - 100% Malaysia Origin

- Low thickness swelling
- High dimension stability
- Environmentally friendly



#### TERMITES RESISTANCE

Scania flooring are scientifically proven to be greatly resistant against termites attacks, thanks to the coreboard's excellent properties.



#### 4 EASY INSTALLATION SYSTEM

- Installation friendly
- Click for long-term performance
- Soundable
- Proven System

#### 5 BACKER - 100% Europe Origin

- Superior moisture resistance
- Dimension stability

#### 6 VACUUM EDGE PROTECTION SYSTEM (VEPS)

- Perfect edge protection against moisture
- Better dimensional stability
- Minimum squeaking sound upon installation



With VEPS



Without VEPS

FL-006-SG

FL-005-SG

FL-001-SG

FL-003-SG

FL-002-SG

FL-004-SG

## ADVANTAGES



Termite Resistant



Cigarette Burn Resistant



Water Resistant



Environmental Friendly



Coaster Chair Resistant



Stain Resistant



Authentic Direct Manufacturer Warranty



Dirt Resistant



Existing Floor Need Not To Be Hacked



Impact Resistant



Light Resistant



Chemical Resistant



Warm On Feet



Not Easily Flammable



Glue Free Installation



Does Not Breed Dustmite



Suitable For Underflooring Heating



Low Formaldehyde Emission

# VINYL FLOORING



Vinyl flooring is definitely what you prefer if you're looking for a high quality and durable flooring. We offer wide range of fine quality vinyl flooring that beautify your space.



**PVI** is a new type of trendy and cost efficient resilient flooring that is simply artificial composite floors such as rubber, plastic, PVC and the latest addition, Vinyl. These synthetic flooring, which has been around for more than a century, act as a cost efficient substitute to natural floors



# EVI

## **VI WORLD GROUP SDN. BHD.** 1259740-V

21-1, Jln Bulan BZ, U5/BZ Bandar Pinggiran  
Subang, Seksyen U5, 40150 Shah Alam,  
Selangor.

Tel : +(603) 7847 6019 Tel : +(603) 7831 6285

Fax : +(603) 7847 6015

Email : [info@evigroup.com.my](mailto:info@evigroup.com.my) | [viworld18@gmail.com](mailto:viworld18@gmail.com)

## **PENANG SHOWROOM**

1F-2, Lorong Setia Sentral 1, Pusat Perniagaan  
Setia Sentral, 14000 Bukit Mertajam, Pulau  
Pinang



EVI My Way My Style



[viworld.group](https://www.instagram.com/viworld.group)



EVI



[www.evigroup.com.my](http://www.evigroup.com.my)